

Health Care Facilities

NORTH BRUNSWICK TWP

MIDDLESEX

Legend

☐ Counties

 NORTH BRUNSWICK TWP

 Hospitals

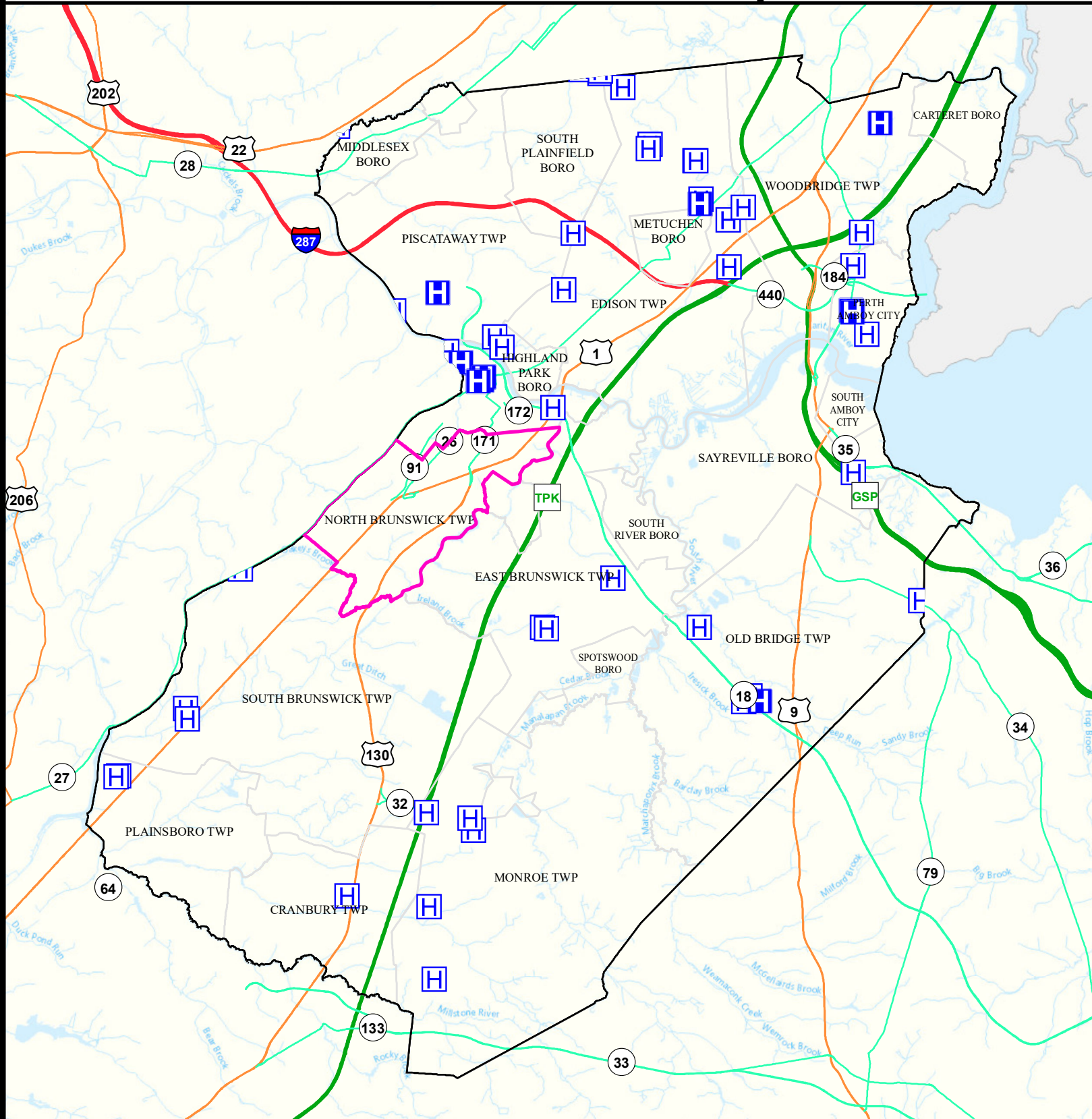
H Nursing Homes

☐ Municipalities

Date: 9/26/2022

0 1.5 3

Miles



Air Non Cancer

NORTH BRUNSWICK TWP

MIDDLESEX

Legend

Combined Hazard Index

2.01 - 3.00

0.75 - 1.00

3.01 - 4.00

1.01 - 2.00

4.01 - 8.09

Counties

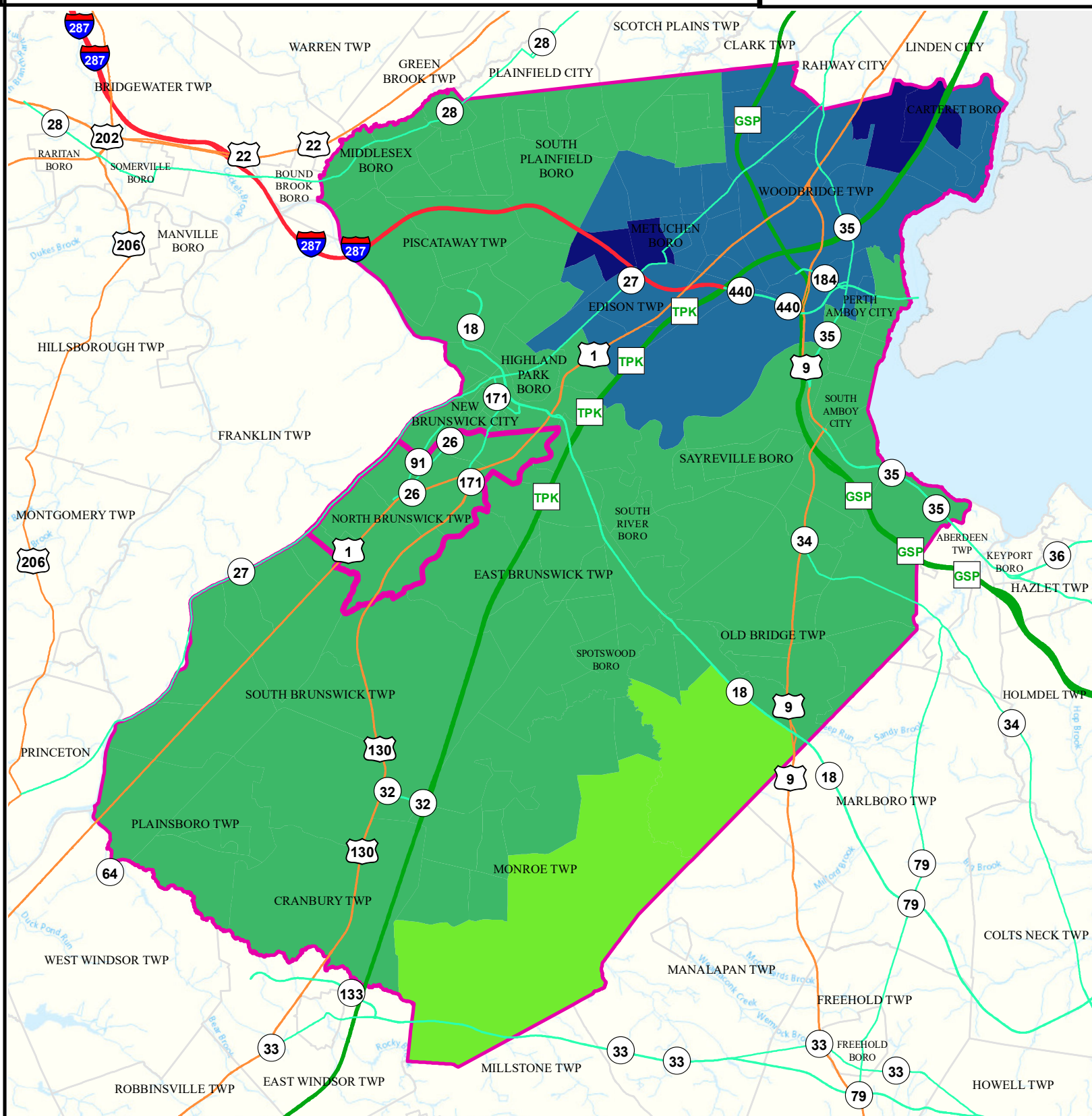
NORTH BRUNSWICK TWP



Date: 9/28/2022

0 1.5 3

Miles



Air Quality Index (AQI)

NORTH BRUNSWICK TWP

MIDDLESEX

Legend

 Municipalities

 NORTH BRUNSWICK TWP

Average AQI Days

 0 - 1

 1.5 - 3

 3.5 - 6.5

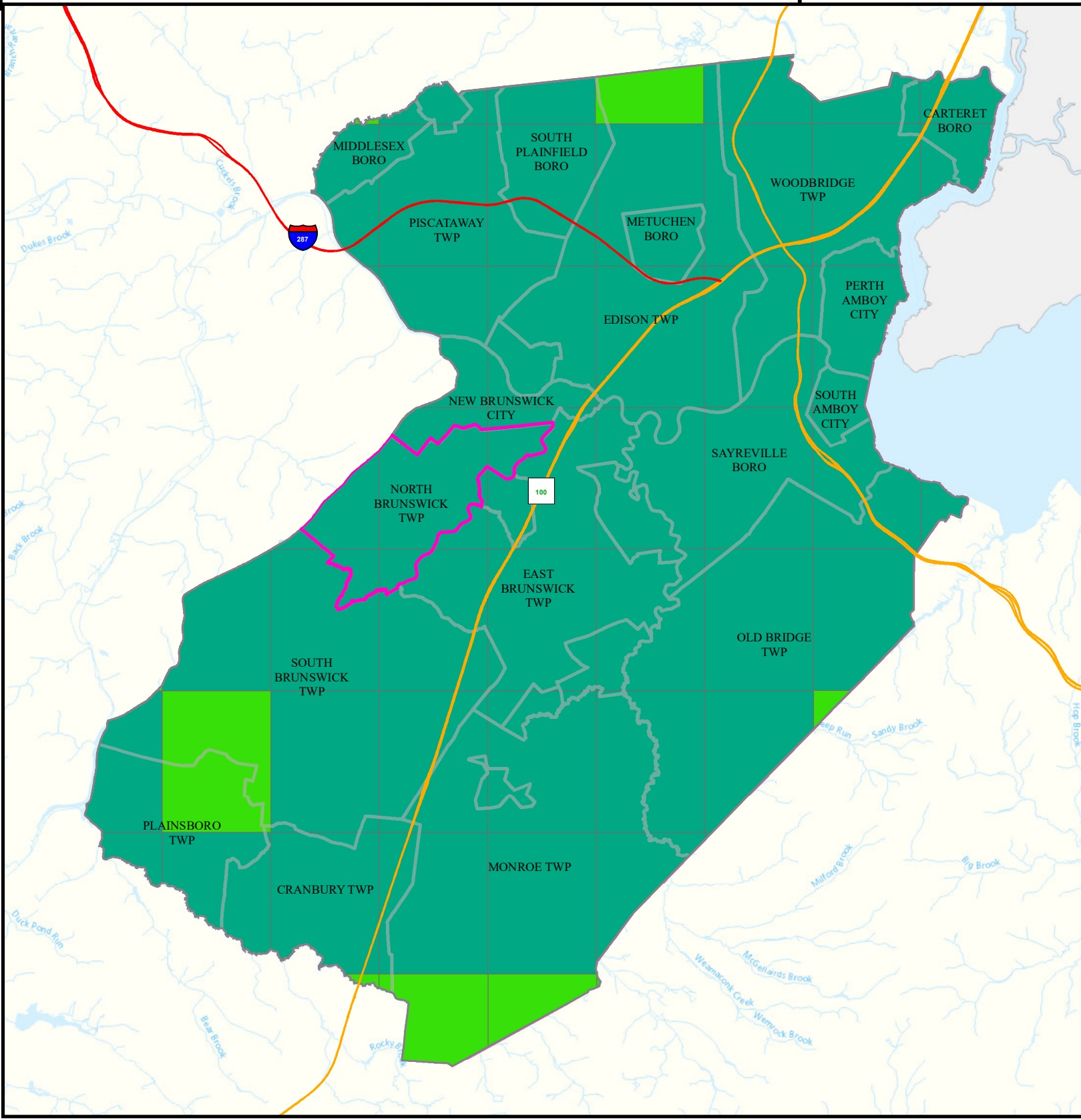
 7 - 12

Air Quality Index (AQI)
Days above 100 (3 yr Avg)
2018 to 2020



0 1.5 3
Miles

Date: 4/18/2022



Community Drinking Water

NORTH BRUNSWICK TWP

MIDDLESEX

Legend

- Counties
- NORTH BRUNSWICK TWP
- Municipalities

MCL and TT Violations
and AL Exceedances

- 0
- 1 - 5

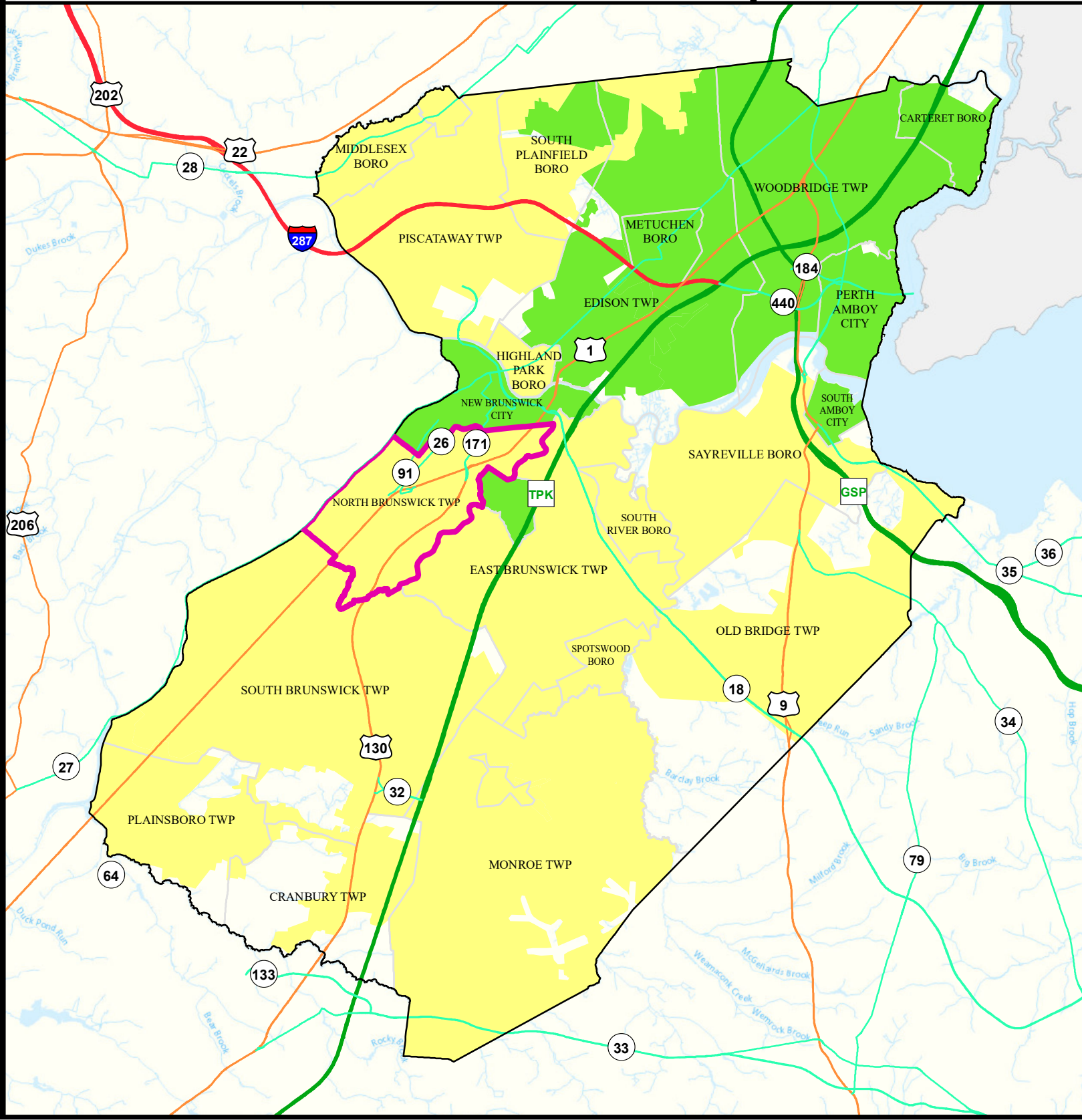
- 6 - 10
- 11 - 15
- 16 - 30



Date: 9/27/2022

0 1.5 3

Miles



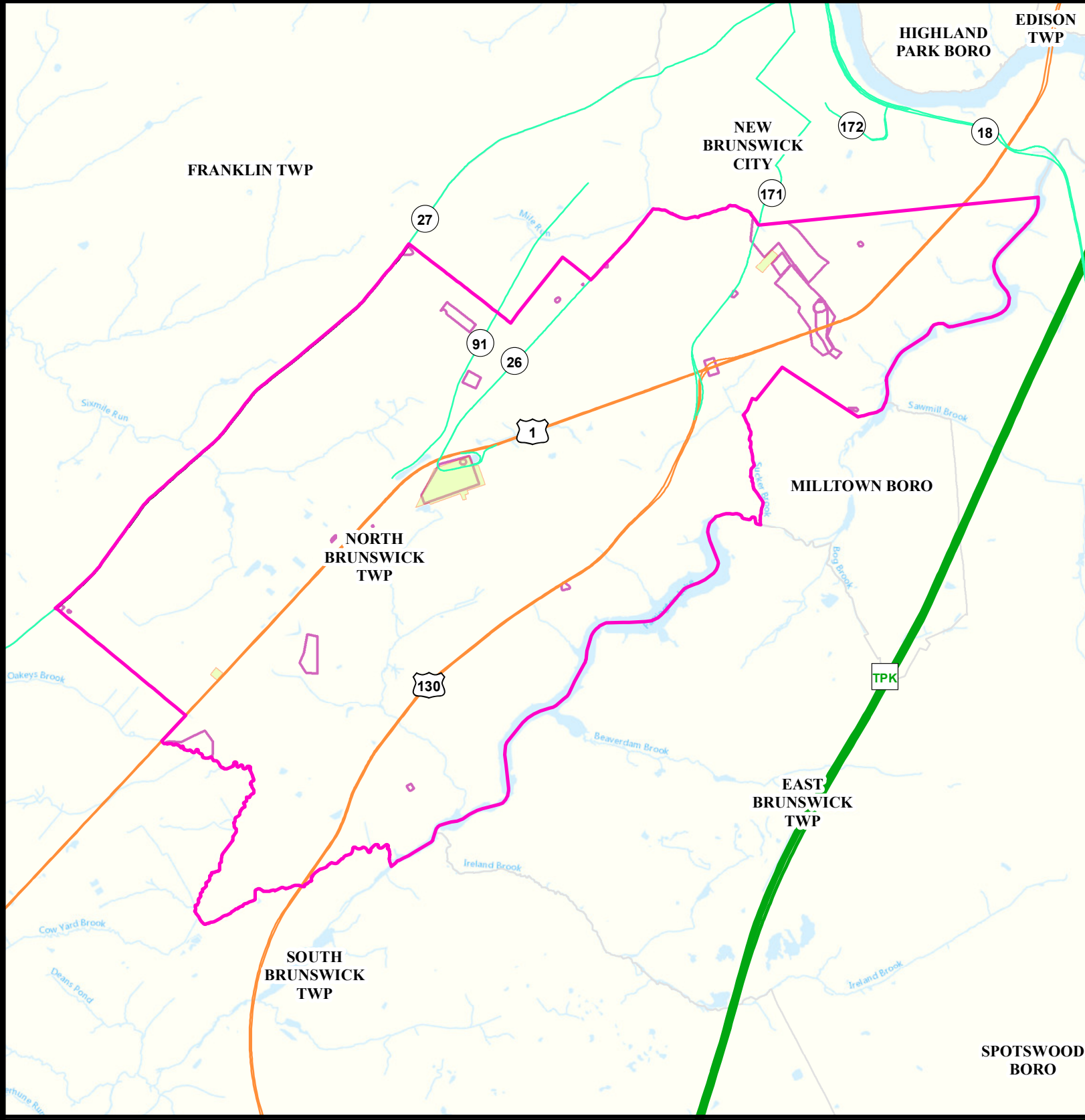
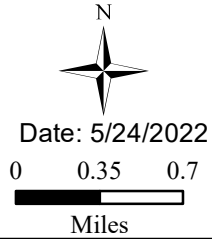
Ground Water/Soil

NORTH BRUNSWICK TWP

MIDDLESEX

Legend

- Counties
- Municipalities
- NORTH BRUNSWICK TWP**
- Deed Notice Areas
- Groundwater Contamination Areas (CKE)
- Groundwater Contamination Areas (CEA)



Surface Water Quality

NORTH BRUNSWICK TWP

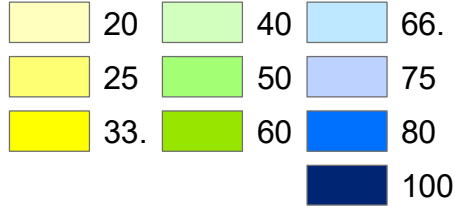
MIDDLESEX

Legend

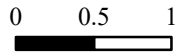
- Counties
- Municipalities
- NORTH BRUNSWICK TWP**

Impaired (Percent)

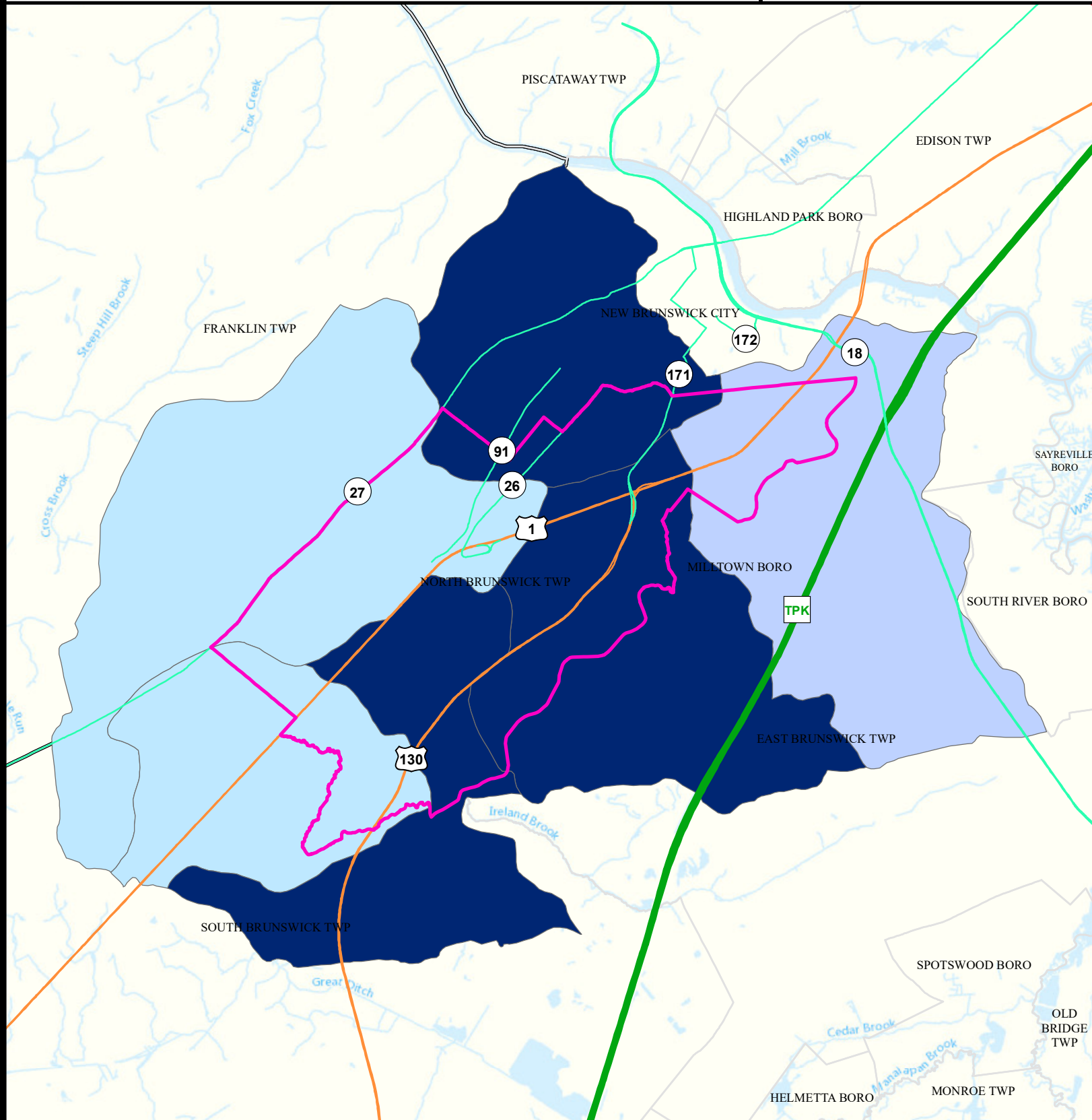
- NA
- 0



Date: 9/26/2022



Miles





Surface Water Quality

MIDDLESEX COUNTY North Brunswick Township

What is a Designated Use?

New Jersey's [Surface Water Quality Standards \(SWQS\)](#) establish the designated uses of the State's surface waters, classify surface waters based on those uses, and specify the water quality criteria and other policies necessary to attain those uses. Designated uses include water supply for drinking, agriculture and industrial uses, fish consumption, shellfish resources, propagation of fish and wildlife, and recreation.

The table below show the designated use information for your municipality. For more information on Surface Water Quality, see the Healthy Community Planning Report for this municipality.

AU_name	Aquatic_General	Aquatic_Trout	Water_Supply	Recreation	Shellfish	Fish_Consumption
Mile Run	Non Attaining	NA	Insufficient Data	Non Attaining	NA	Insufficient Data
Sixmile Run (above Middlebush Rd)	Non Attaining	NA	Attaining	Non Attaining	NA	Insufficient Data
Lawrence Bk (Milltown to Church Lane)	Non Attaining	NA	Non Attaining	Non Attaining	NA	Non Attaining
Lawrence Bk (below Milltown/Herberts br)	Non Attaining	NA	Non Attaining	Attaining	NA	Non Attaining
Oakeys Brook	Attaining	NA	Non Attaining	Non Attaining	NA	Insufficient Data
Lawrence Bk (Church Lane to Deans Pond)	Non Attaining	NA	Non Attaining	Non Attaining	NA	Non Attaining

Flooding (Urban Land Cover)

NORTH BRUNSWICK TWP

MIDDLESEX

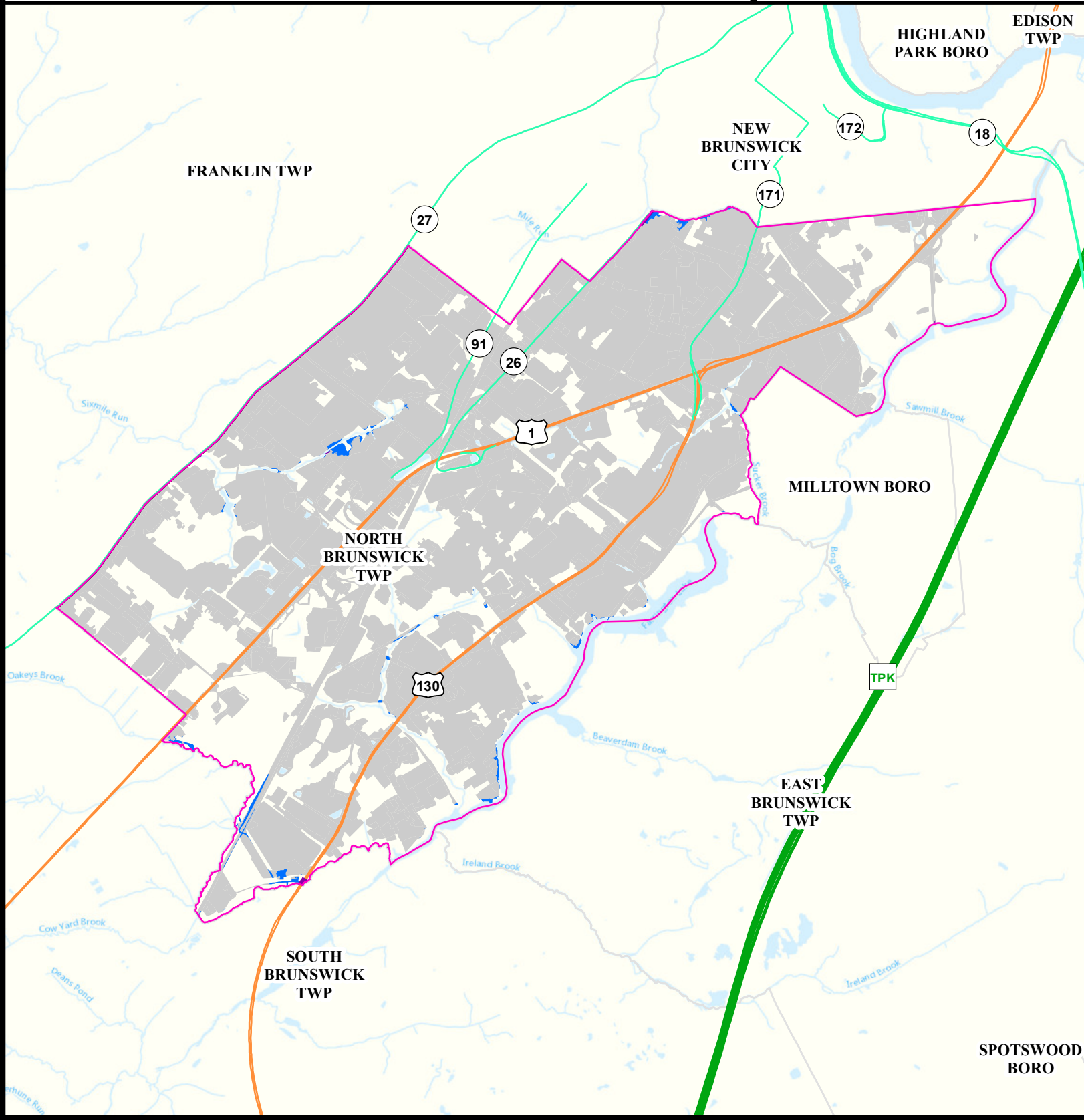
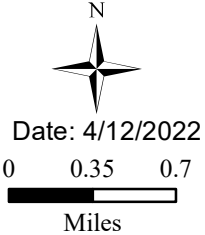
Legend

- Counties
- NORTH BRUNSWICK TWP
- Municipalities

- Urban Land
- Urban Land Flooded

- Toll Road
- Interstate
- US Highway
- State Highway
- Impacted Roads

Impacted roads show only county level or higher routes in flooding areas.





Air Permit Sources

NORTH BRUNSWICK TWP

MIDDLESEX

Legend

-  Counties
-  NORTH BRUNSWICK TWP

Facility Type

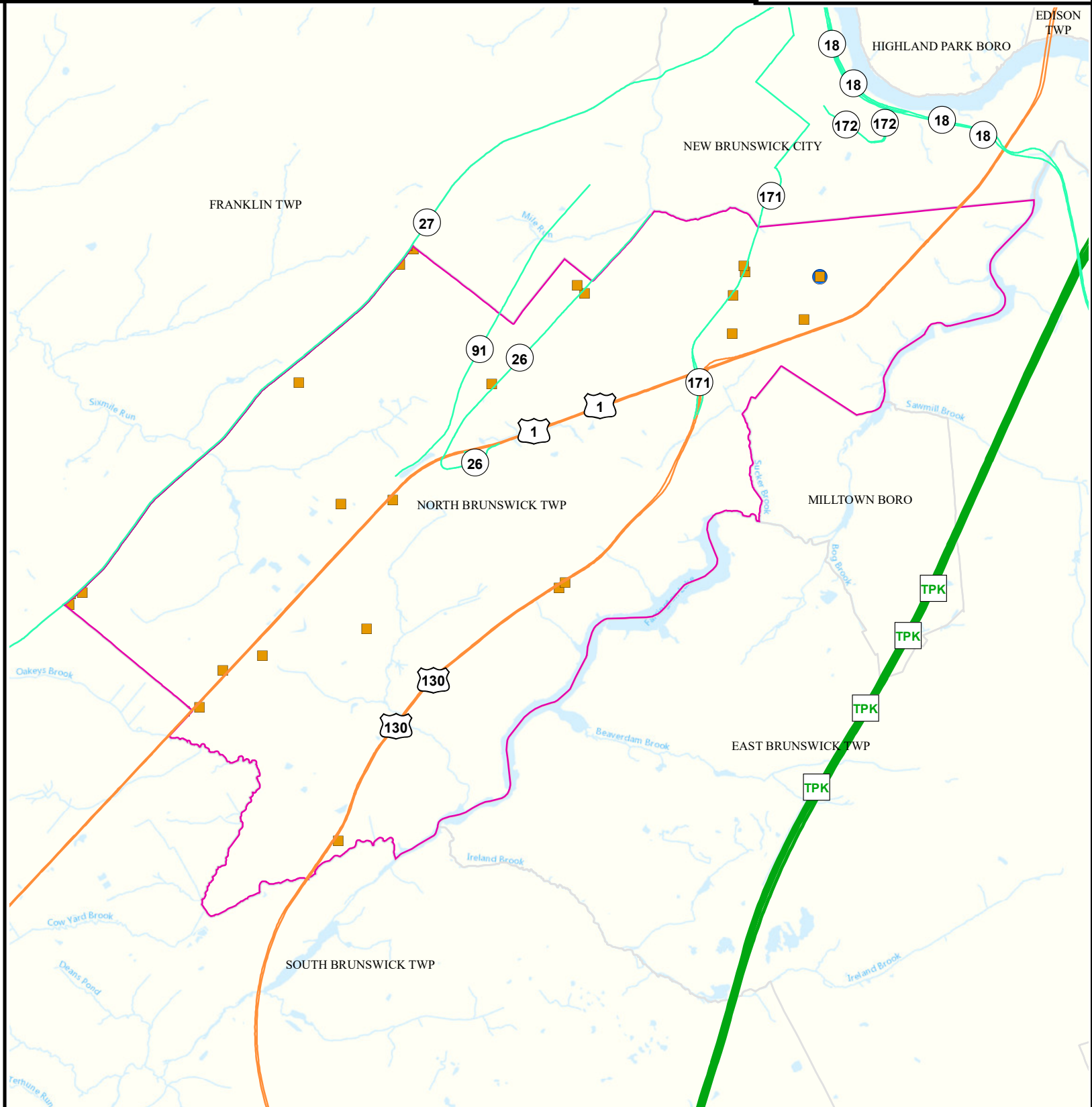
-  Major
-  Minor



Date: 4/12/2022

0 0.375 0.75

Miles



Contaminated Sites

NORTH BRUNSWICK TWP

MIDDLESEX

Legend

- Counties
- NORTH BRUNSWICK TWP**
- Municipalities

Known Contaminated Sites

Density Weighting

- 0
- 1
- 2
- 3
- Other

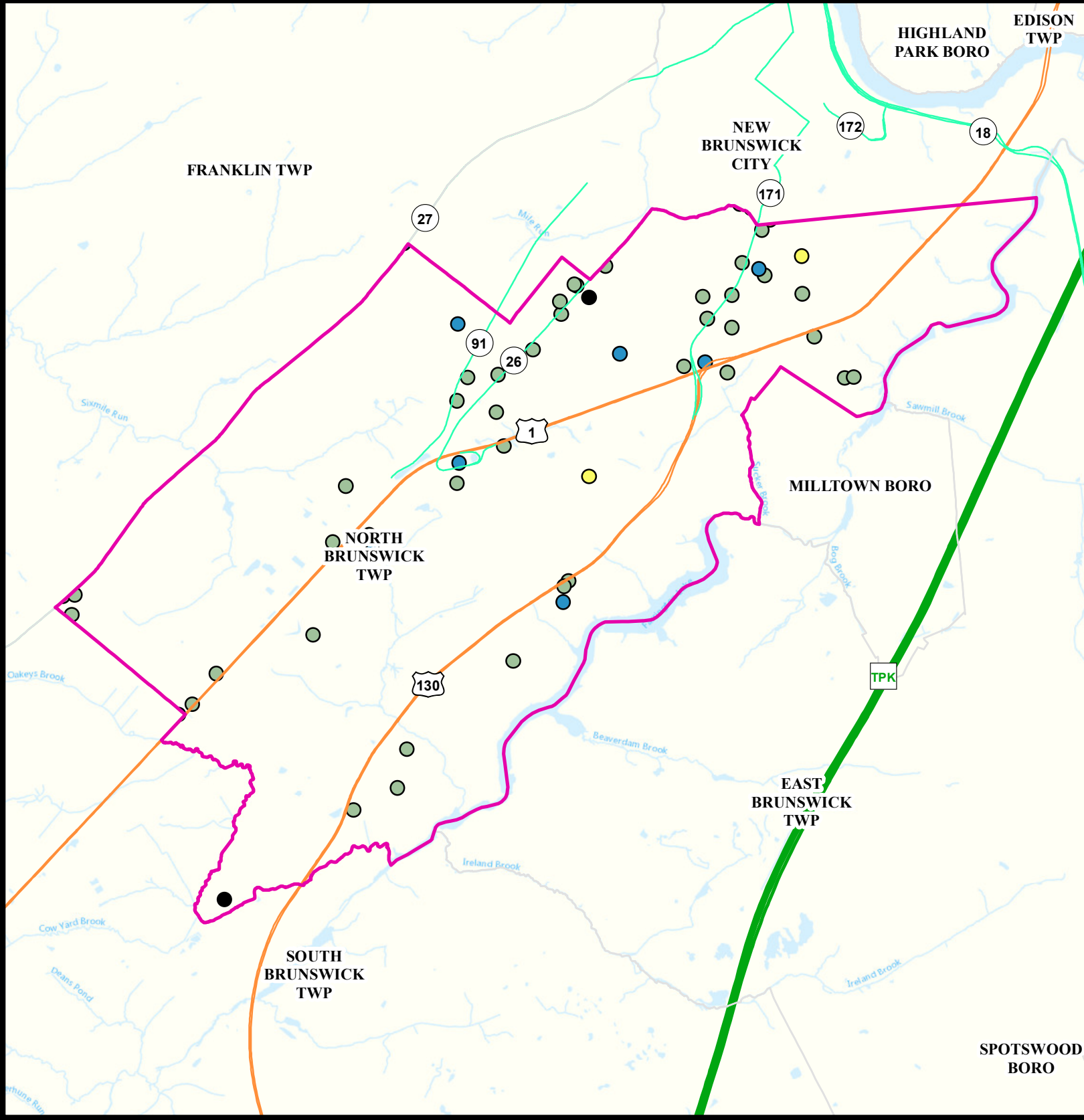


Date: 5/25/2022

0 0.35 0.7



Miles



Scrap Metal Facilities

NORTH BRUNSWICK TWP

MIDDLESEX

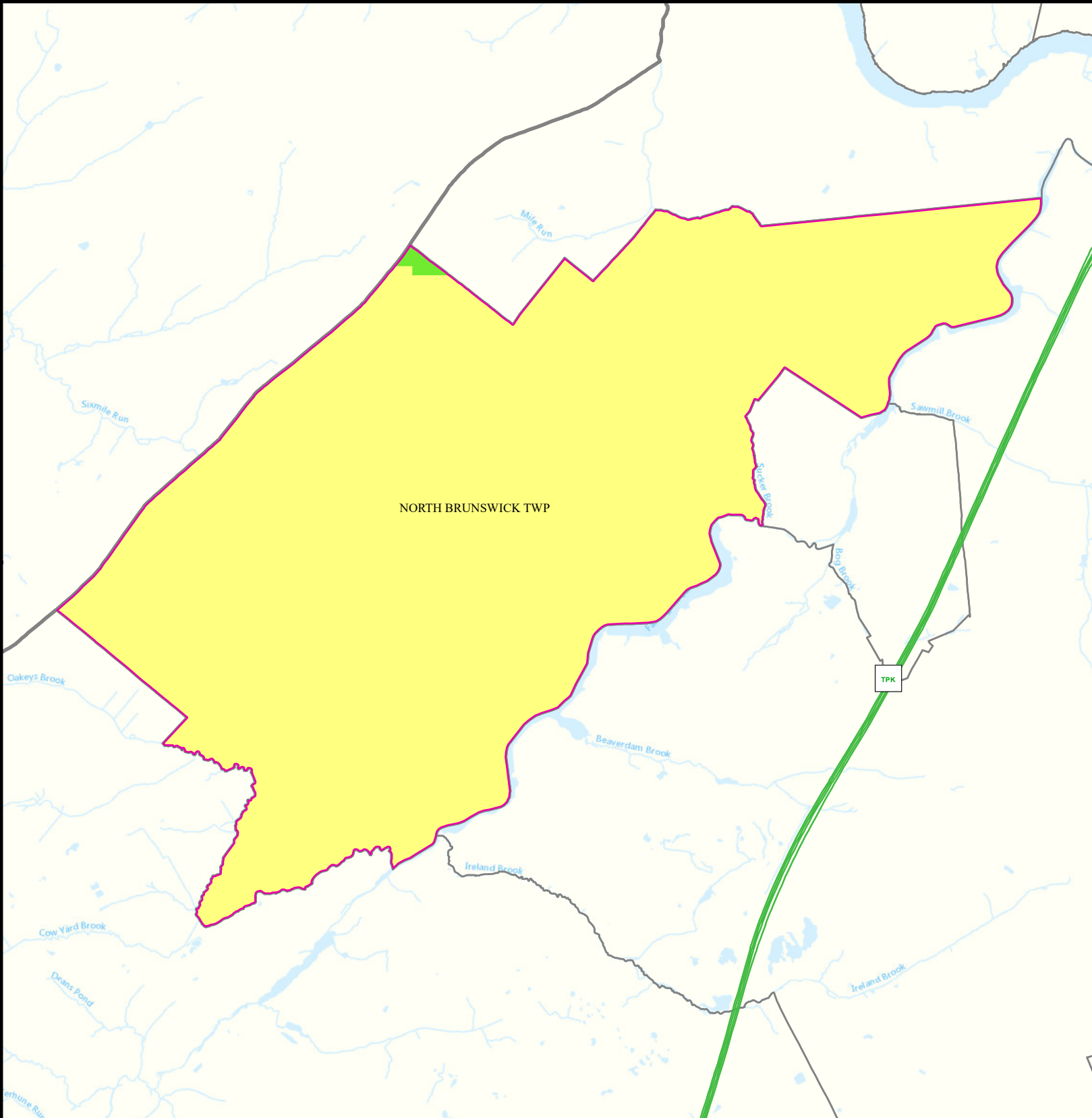
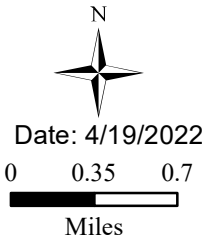
Legend

- Municipalities
- NORTH BRUNSWICK TWP
- Scrap Metal Facility

Sites Per Square Mile

- | | |
|------------|-----------|
| 0 - 0.29 | 2.3 - 4.4 |
| 0.30 - 1.1 | 4.5 - 8.3 |
| 1.2 - 2.2 | |

Scrap Metal Processing
Sites per Sq Mile
2022



Open Space

NORTH BRUNSWICK TWP


MIDDLESEX

Legend

 Counties

 NORTH BRUNSWICK TWP

 Open Space

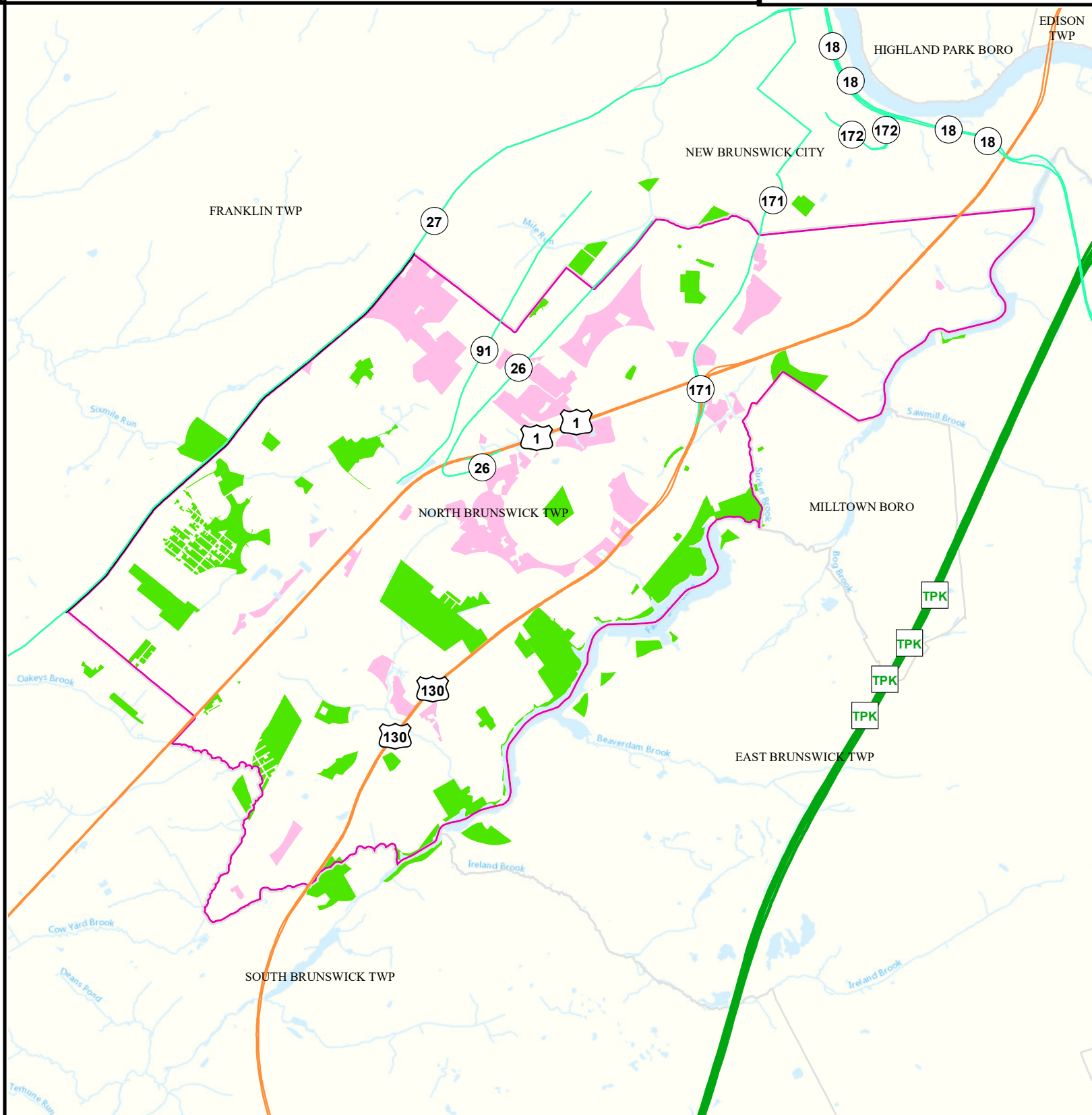
 Residential Population
> 1/4 Mile from Open Space



Date: 9/27/2022

0 0.375 0.75

Miles



Traffic

NORTH BRUNSWICK TWP

MIDDLESEX

Legend

- Counties
- NORTH BRUNSWICK TWP
- 1000 ft. Road Buffer

Daily Traffic Volume	
	25,000 - 50,000
	50,001 - 75,000
	75,001 - 100,000
	100,001 - 125,000
	125,000+

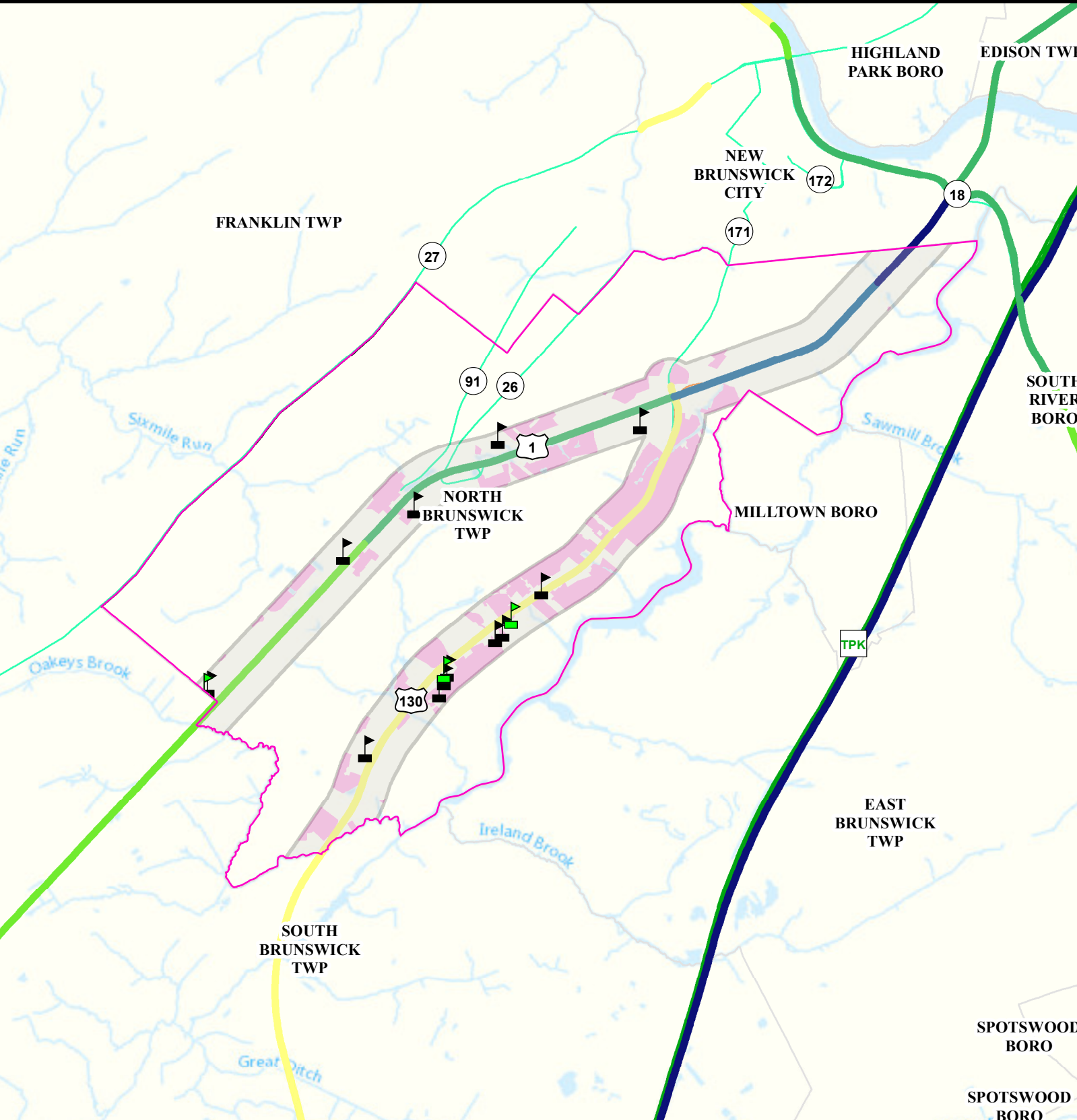
Receptors	Count
Childcare	12
School	3
Population	9906

N

Date: 4/19/2022

00.40.8

Miles



Low Birth Weight

North Brunswick Twp

Middlesex

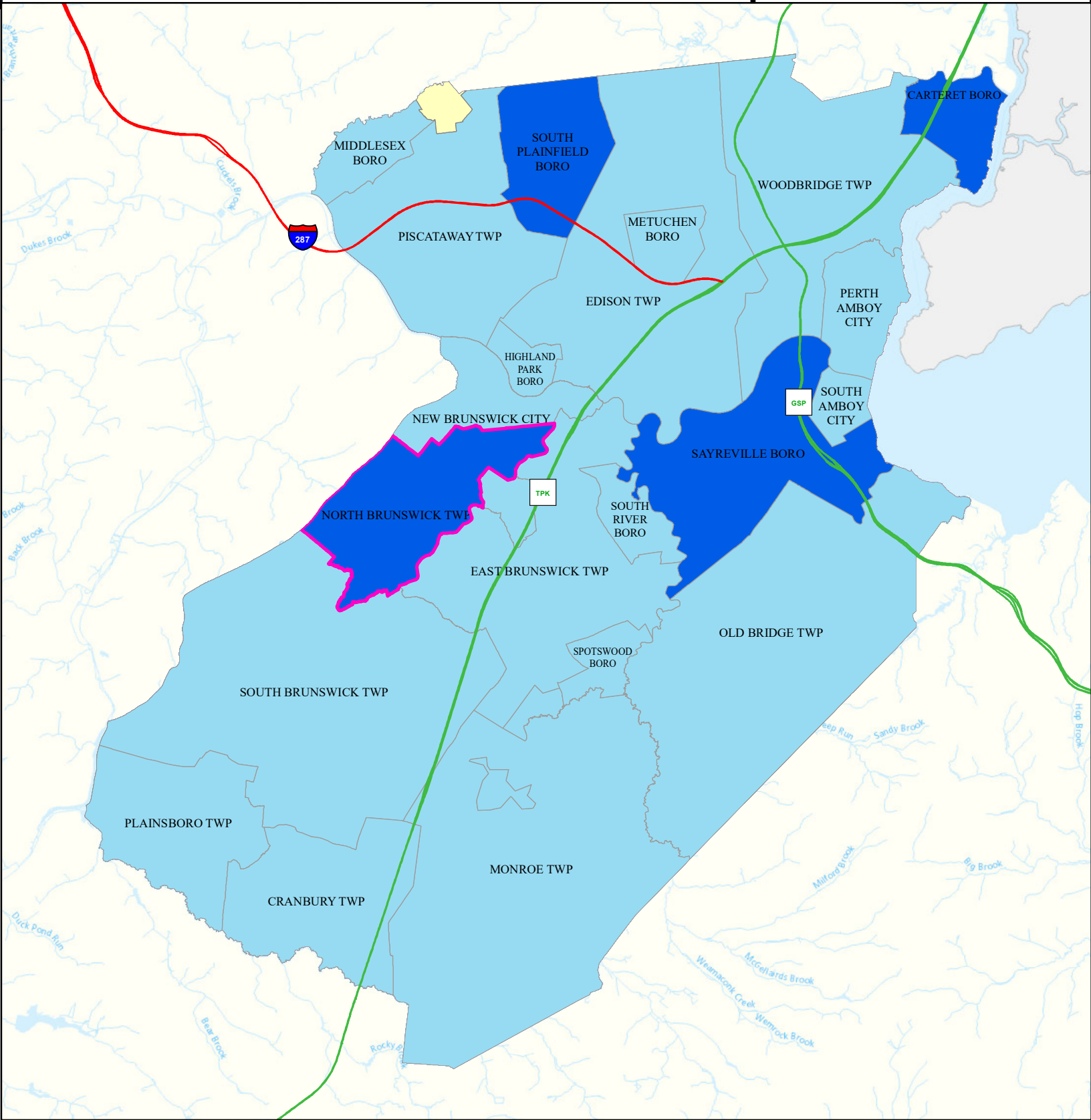
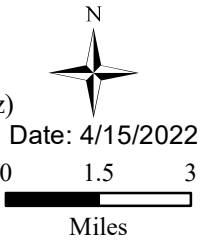
Legend

- Municipalities
- North Brunswick Twp

State Comparison

- Above
- Below
- No Difference
- Suppressed

Birth Rate
Low Birth Weight
(% All Births < 5 lb, 8 oz)
2016 to 2020



Age of Housing

NORTH BRUNSWICK TWP

MIDDLESEX

Legend

- Counties
- Municipalities
- NORTH BRUNSWICK TWP**

Year House Constructed

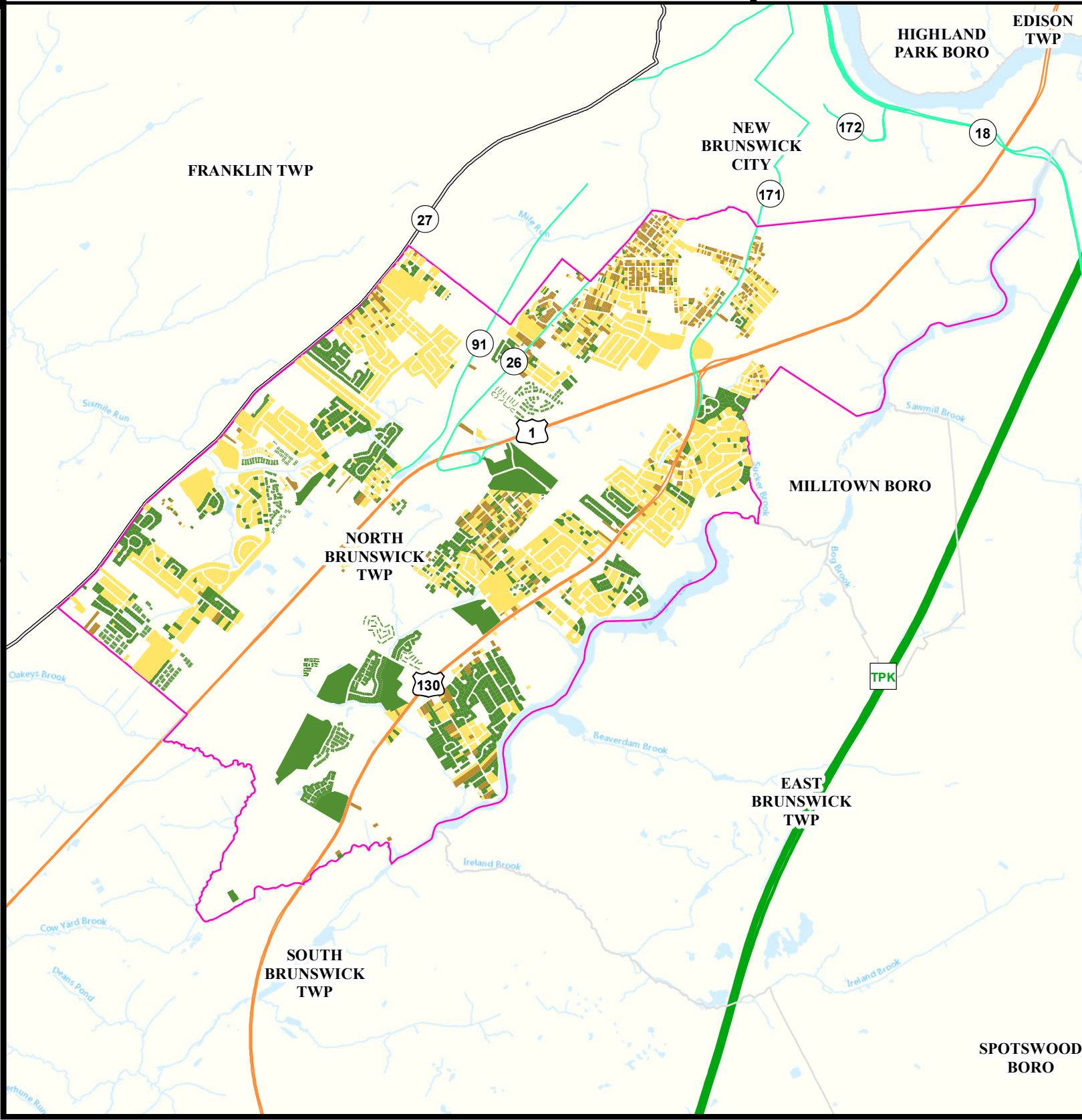
- Pre 1950
- Between 1951 and 1978
- After 1978
- Unknown



Date: 4/12/2022

0 0.35 0.7

Miles



Asthma (Emergency Department)

North Brunswick Twp

Middlesex

Legend

- Municipalities
- North Brunswick Twp

State Comparison

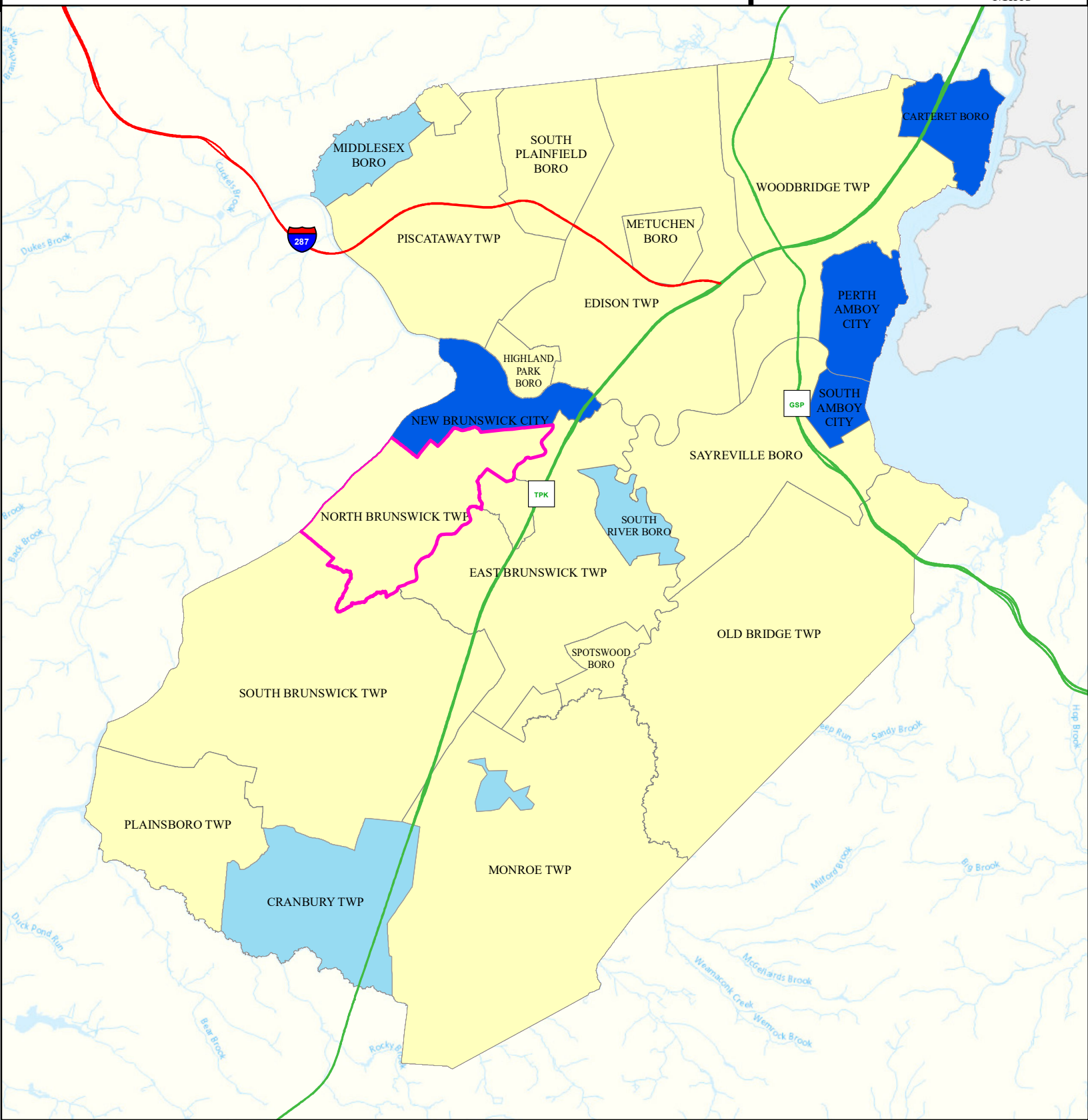
- Above
- No Difference
- Below
- Suppressed

Age-adjusted Rate
per 10,000 People
2016 to 2019
Emergency Department
Visits for Asthma

Date: 4/12/2022
0 1.5 3



Miles



Heart Attack (AMI) (Inpatient)

North Brunswick Twp

Middlesex

Legend

- Municipalities
- North Brunswick Twp

State Comparison

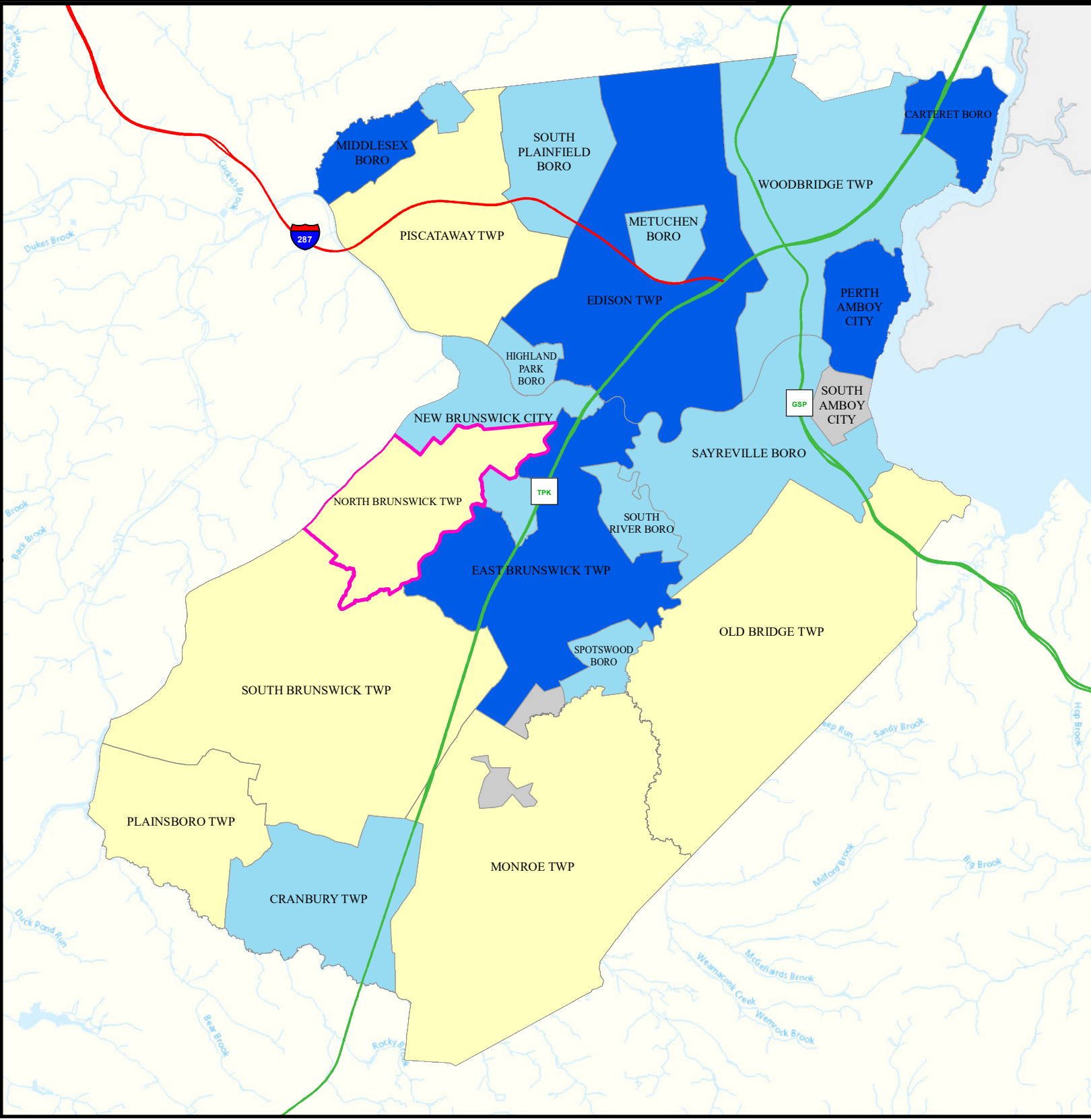
- Above
- No Difference
- Below
- Suppressed

Age-adjusted Rate
per 10,000 People
2016 to 2019

Inpatient Visits for AMI
(Acute Myocardial Infarction) 0 1.25 2.5

Date: 4/11/2022

Miles



Heart Disease Deaths

North Brunswick Twp

Middlesex

Legend

- Municipalities
- North Brunswick Twp

State Comparison

- Above
- Below
- No Difference
- Suppressed

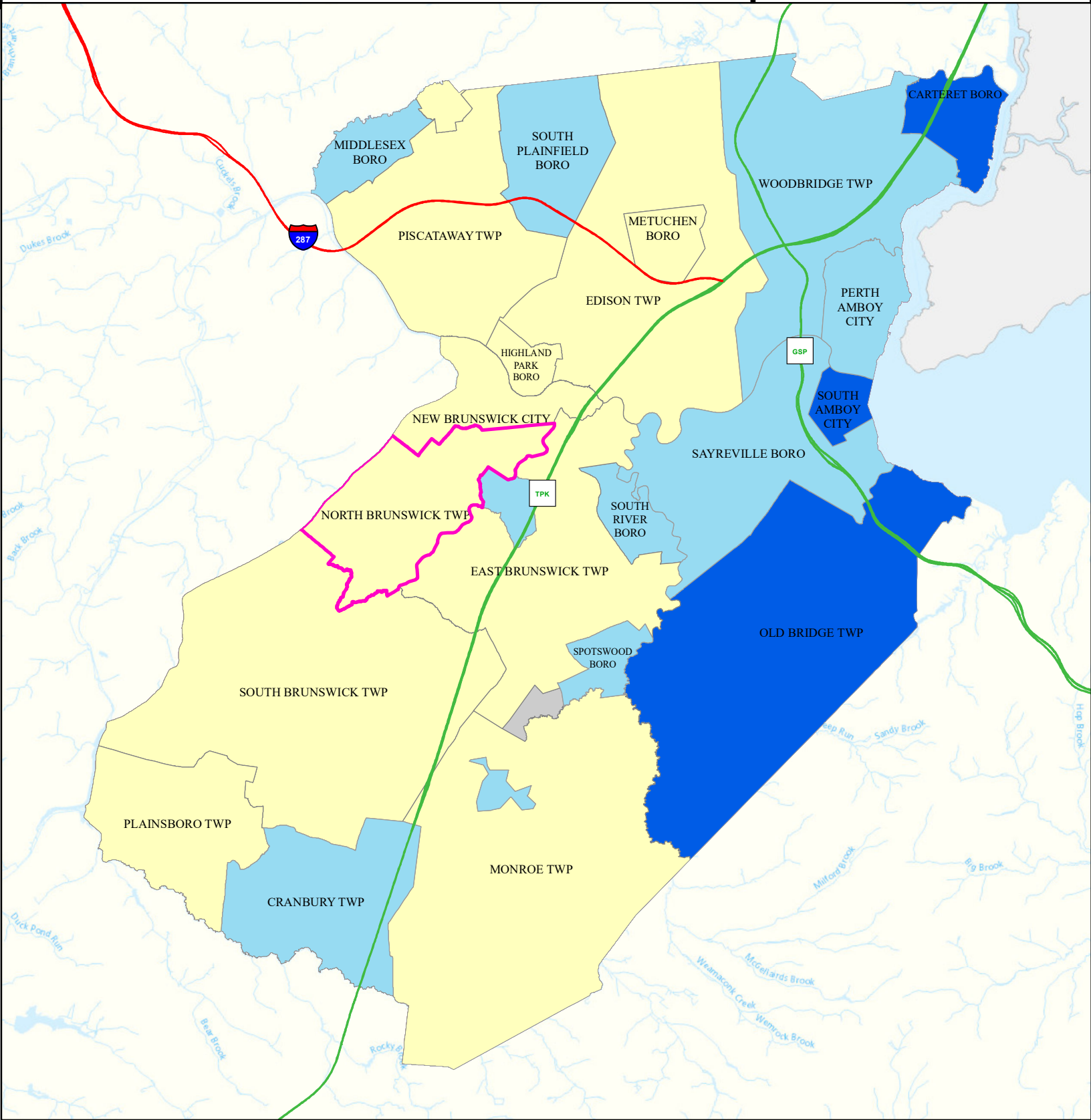
Age-adjusted Death Rate
per 100,000 People
2015 to 2019

Deaths for Heart Disease

Date: 4/16/2022

0 1.5 3

Miles



COPD (Emergency Department)

North Brunswick Twp

Middlesex

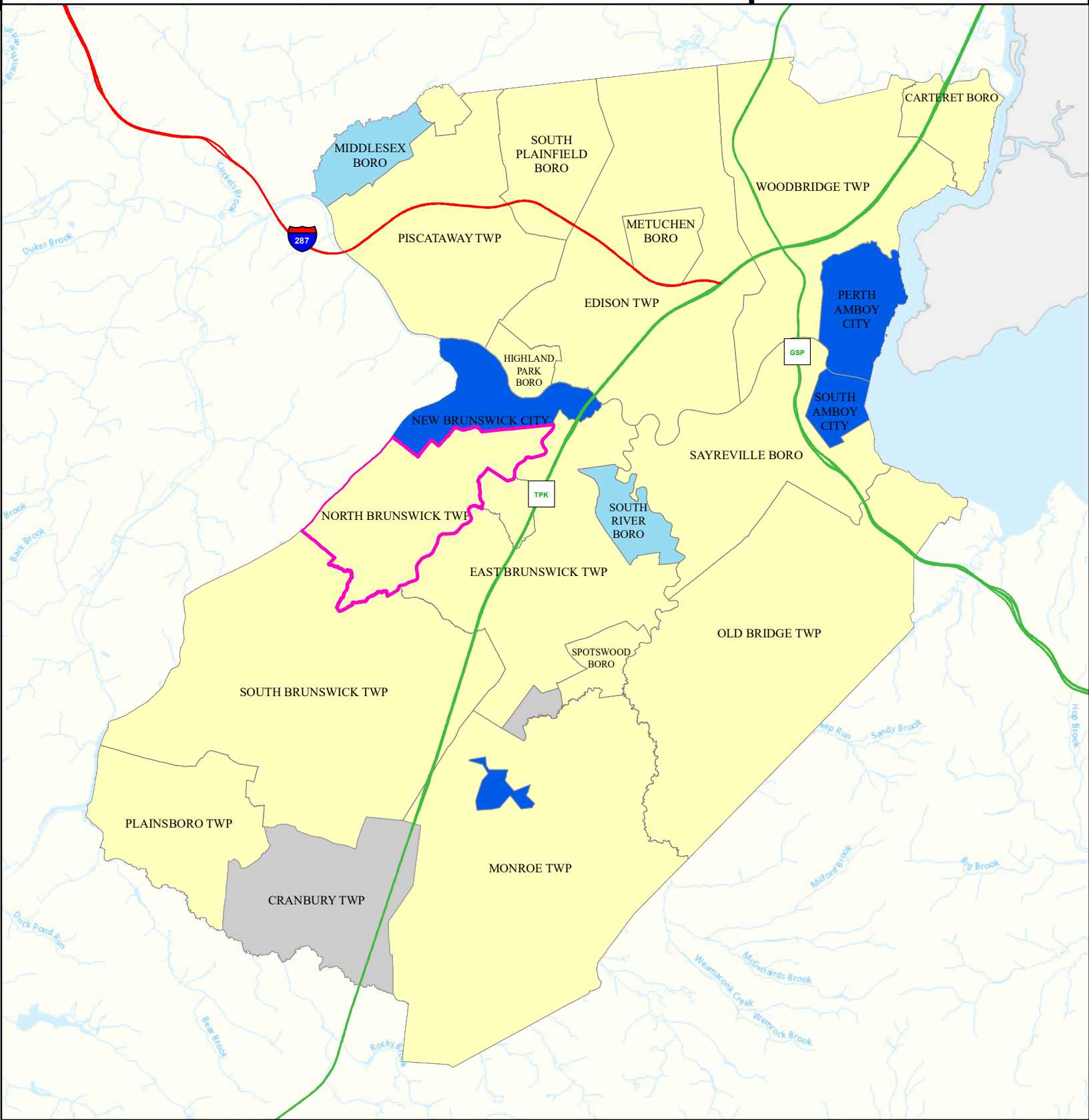
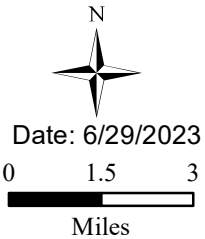
Legend

- Municipalities
- North Brunswick Twp

State Comparison

- Above
- Below
- No Difference
- Suppressed

Age-adjusted Rate
per 10,000 People
2016 to 2019
Emergency Department
Visits for COPD



Stroke (Inpatient)

North Brunswick Twp

Middlesex

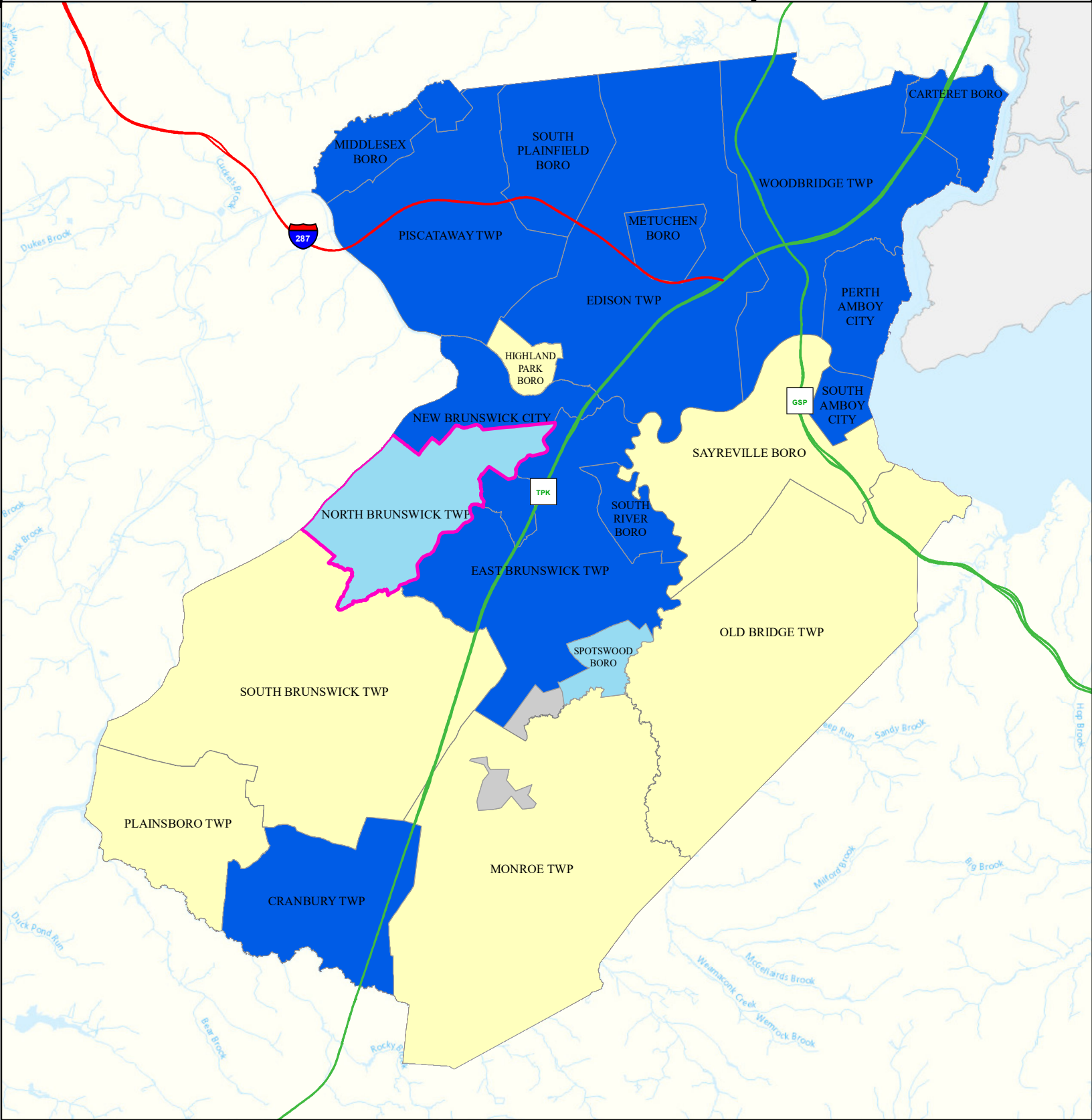
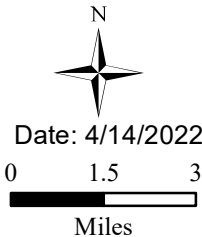
Legend

- Municipalities
- North Brunswick Twp

State Comparison

- Above
- Below
- No Difference
- Suppressed

Age-adjusted Rate
per 10,000 People
2016 to 2019
Inpatient Visits
for Stroke



All Cancer Deaths

North Brunswick Twp

Middlesex

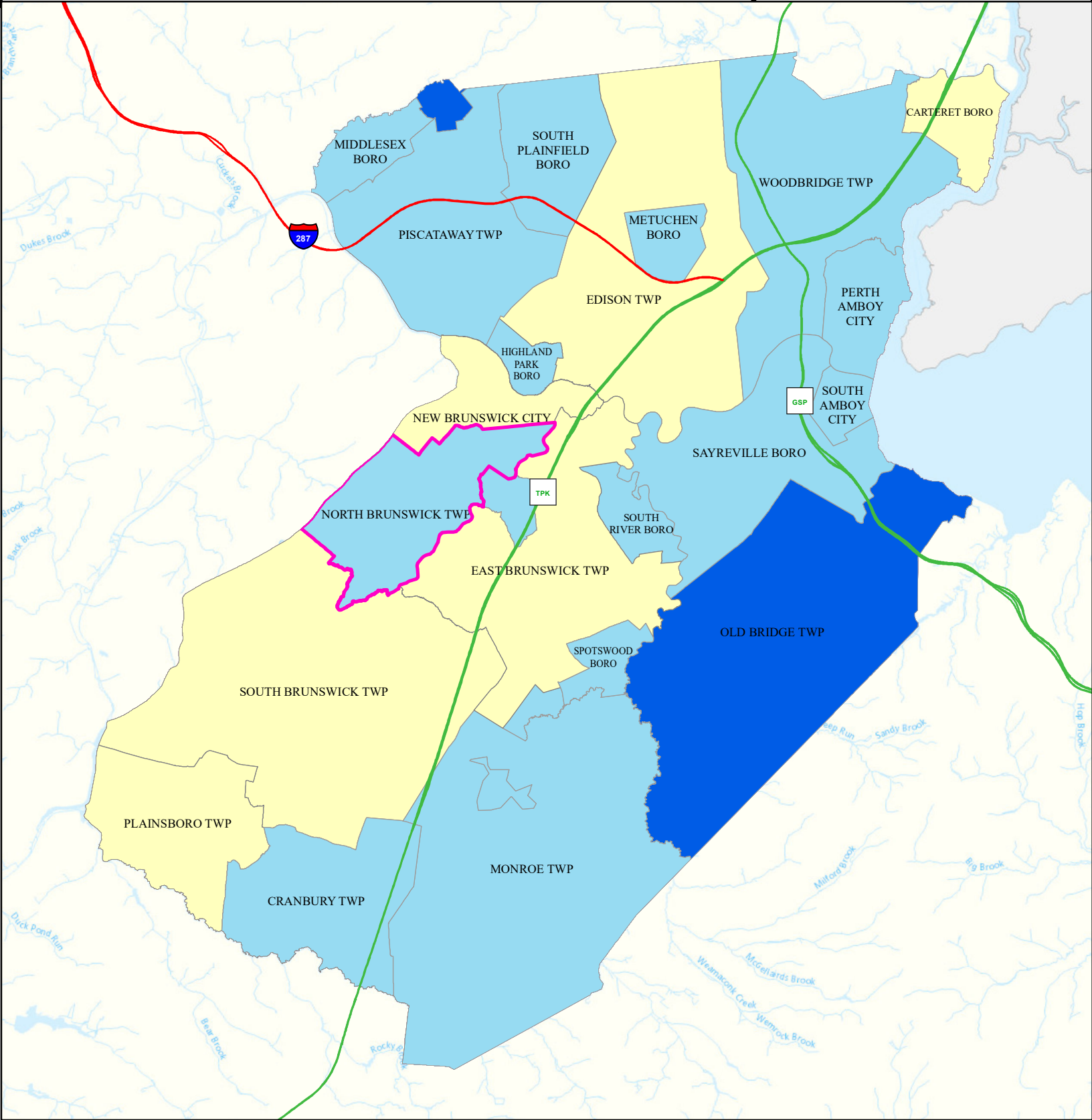
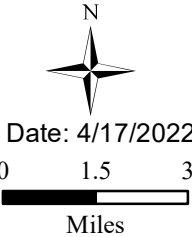
Legend

- Municipalities
- North Brunswick Twp

State Comparison

- Above
- No Difference
- Below
- Suppressed

Age-adjusted Death Rate
per 100,000 People
2015 to 2019
Deaths for Cancer



Lung Cancer Deaths

North Brunswick Twp

Middlesex

Legend

- Municipalities
- North Brunswick Twp

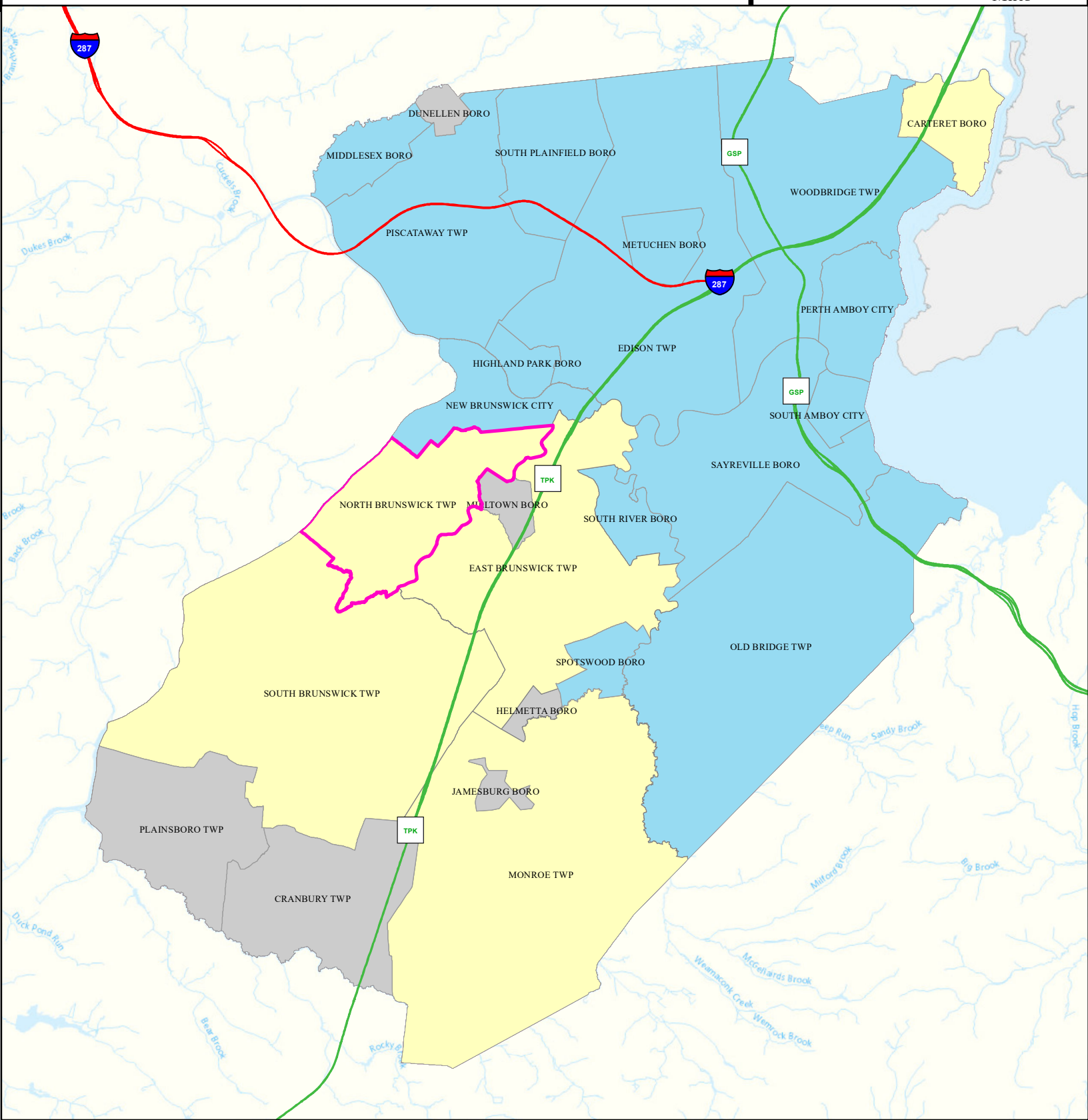
State Comparison

- Above
- No Difference
- Below
- Suppressed

Age-adjusted Death Rate
per 100,000 People
2015 to 2019
Deaths for Lung Cancer

Date: 4/17/2022

0 1.5 3
Miles



Smoking

North Brunswick Twp

Middlesex

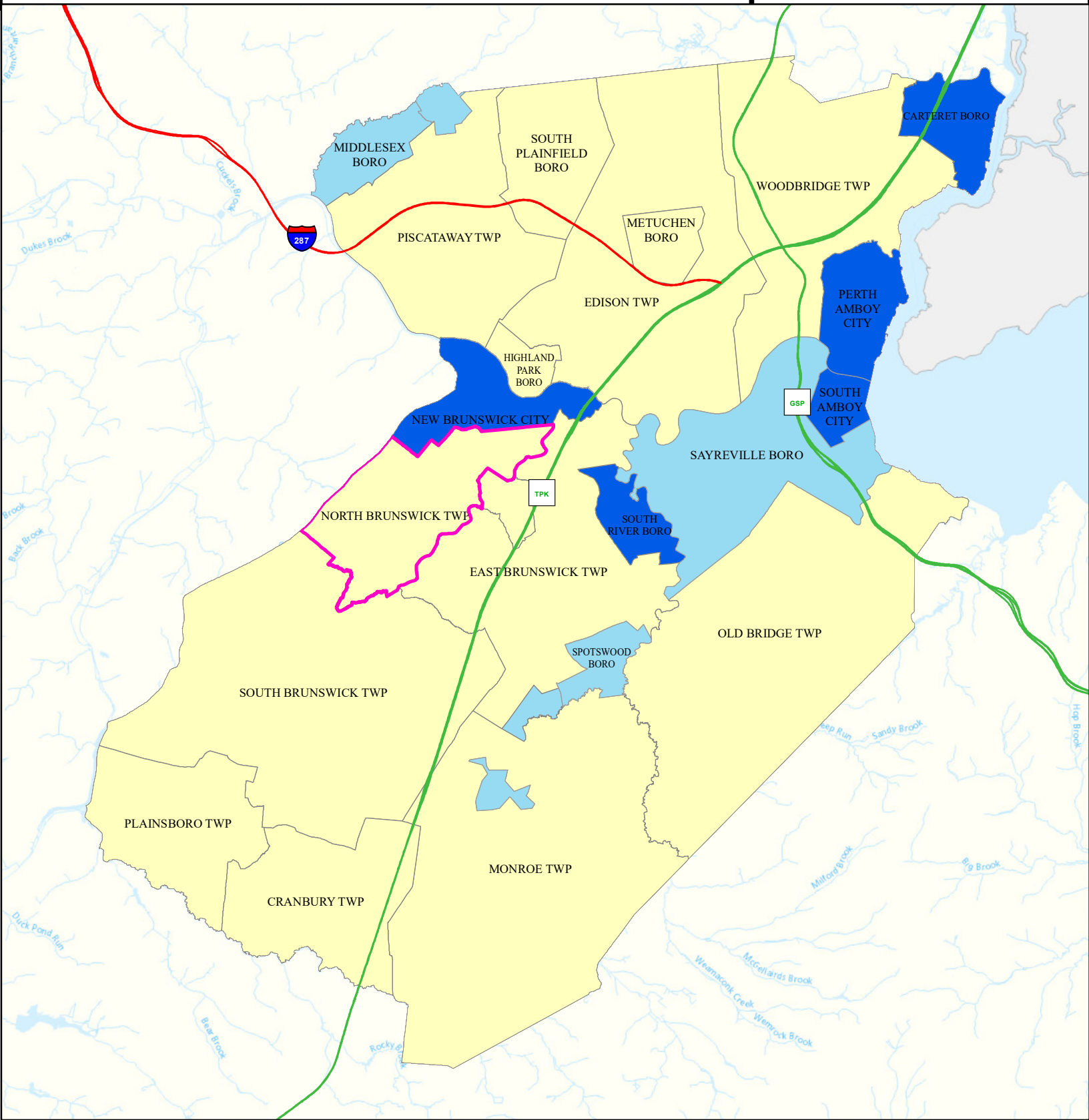
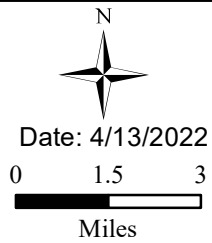
Legend

- Municipalities
- North Brunswick Twp

State Comparison

- Above
- No Difference
- Below
- Suppressed

Smoking Rate
Per Municipal
% of Adults
2018



Obesity

North Brunswick Twp

Middlesex

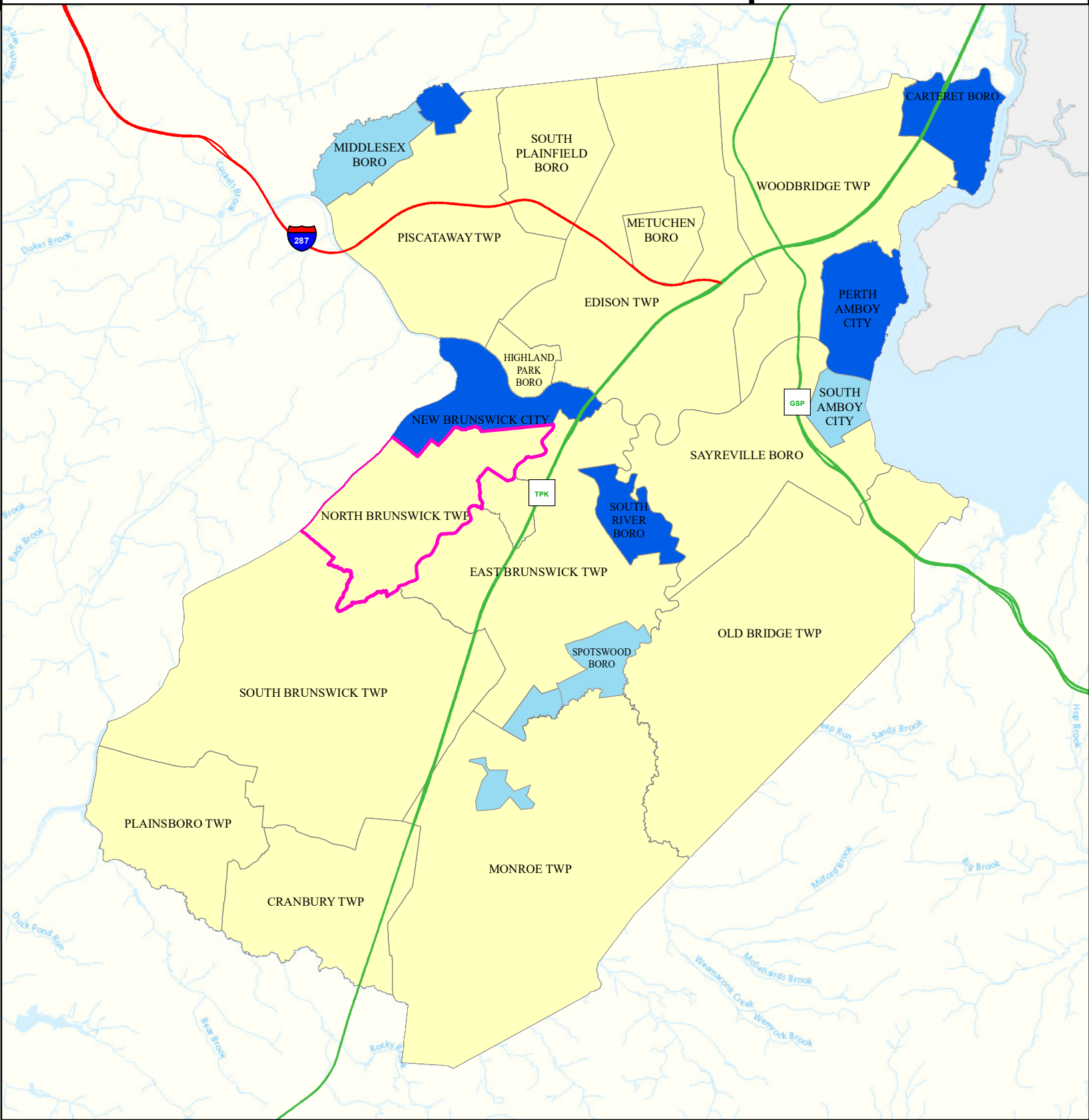
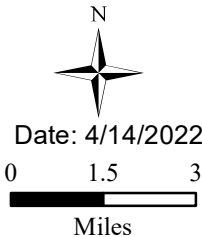
Legend

- Municipalities
- North Brunswick Twp

State Comparison

- Above
- No Difference
- Below
- Suppressed

Obesity Rate
Per Municipal
% of Adults
2018



Heat Related Illness (Emergency Department)

North Brunswick Twp

Middlesex

Legend

- Municipalities
- North Brunswick Twp

State Comparison

- Above
- Below
- No Difference
- Suppressed

Age-adjusted Rate
per 10,000 People
2016 to 2019

Emergency Department
Visits for
Heat Related Illness

